



孕龍科技股份有限公司
ZeroPlus Technology Co., Ltd.

SPECIFICATION

MODEL: I2C (EEPROM 24LX) Specification

PART NO : B08023

VERSION : V1.30

| Approver | | Check | Design |
|----------|----|-------|--------|
| GM | PM | | |
| | | | |

| Customer Confirm |
|------------------|
| |

* Please fax the file to ZeroPlus Technology after signing.

2F, NO.123, Jian Ba Rd,
Chung Ho City, Taipei Hsian, R.O.C.

Tel: +886-2-66202225
Fax: +886-2-22234362



Content

| | | |
|---|------------------------------|----|
| 1 | Software Installation | 3 |
| 2 | User Interface | 7 |
| 3 | Operating Instructions | 10 |



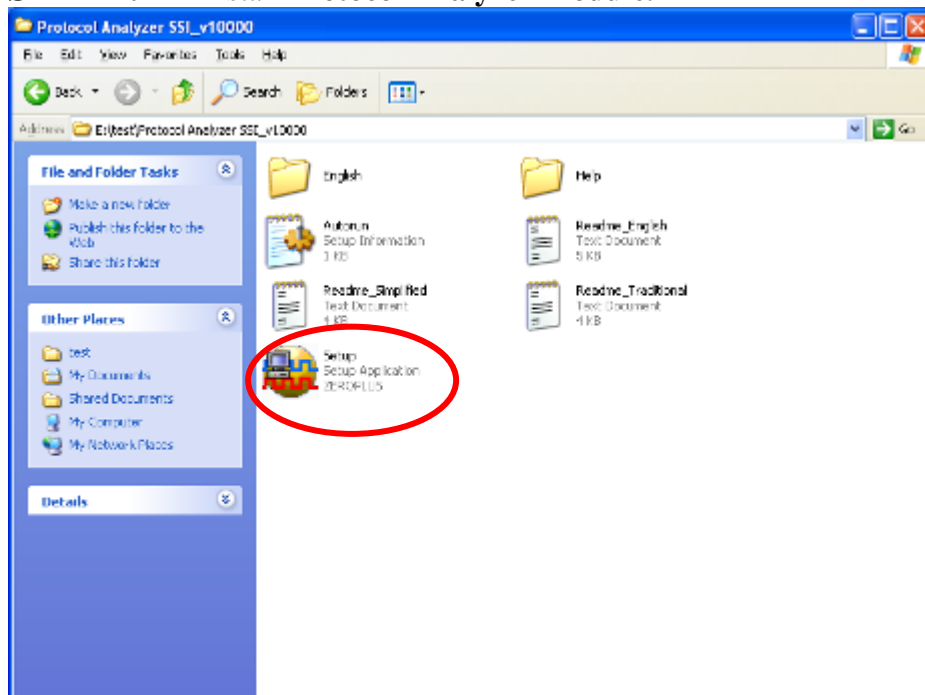
1 Software Installation

Please install the software as the following steps:

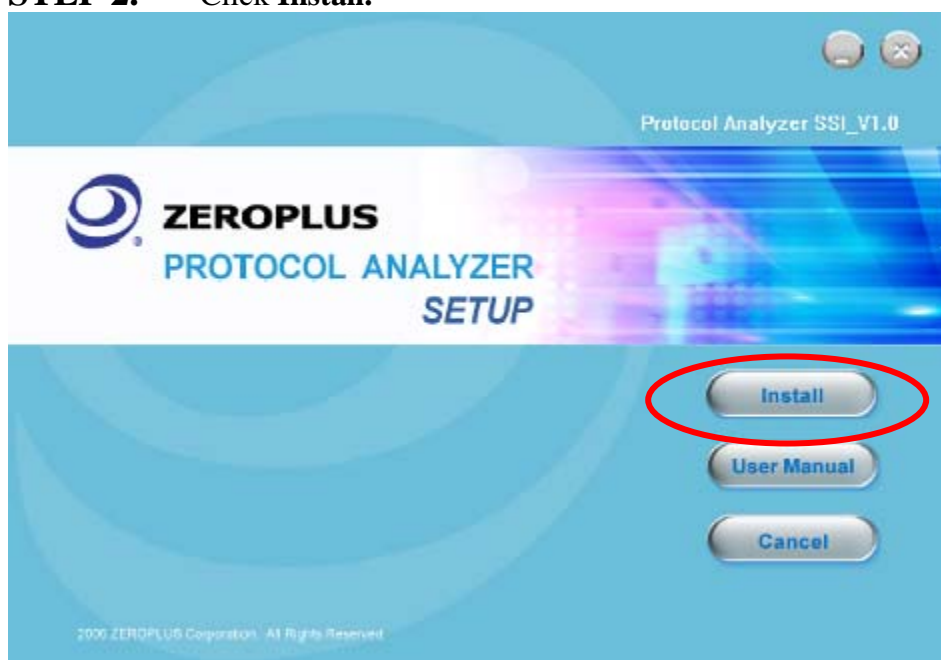
※ Remark: 1. The installation steps for all protocol analyzers are the same; you can complete the installation by following procedures. Following is an example on how to install protocol analyzer SSI.

※ Remark: 2. We won't have additional notice for you, when there is any modification of the module specification. If there is some unconformity caused by the module version upgrade, users should take the module software as the standard.

STEP 1. Install Protocol Analyzer Module.

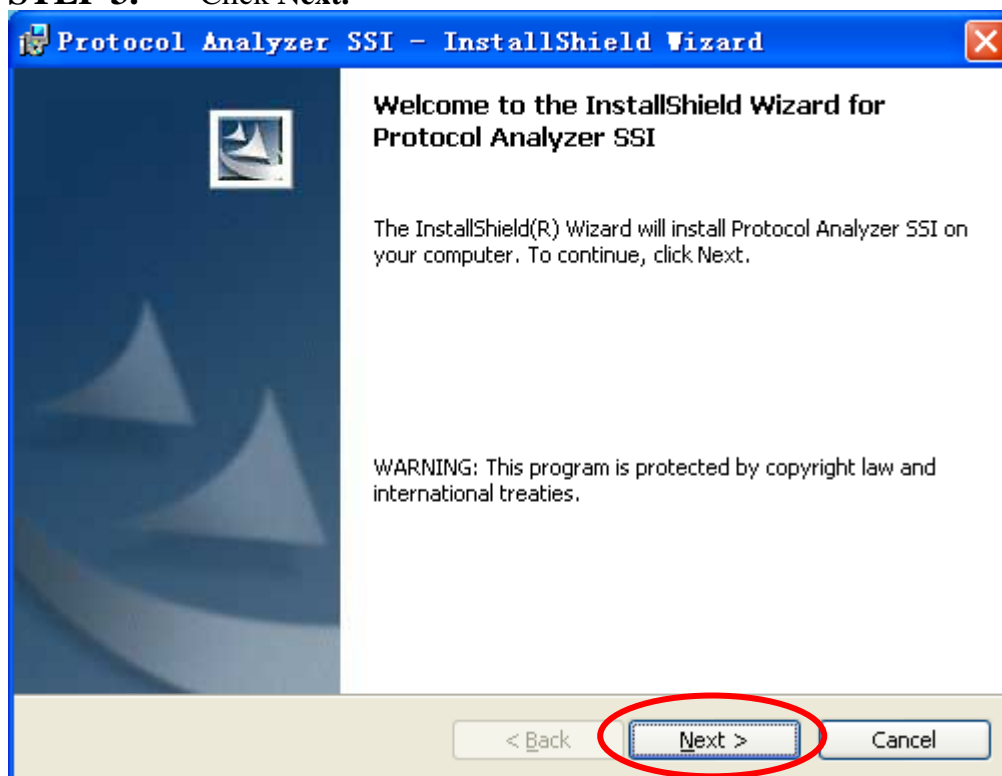


STEP 2. Click Install.

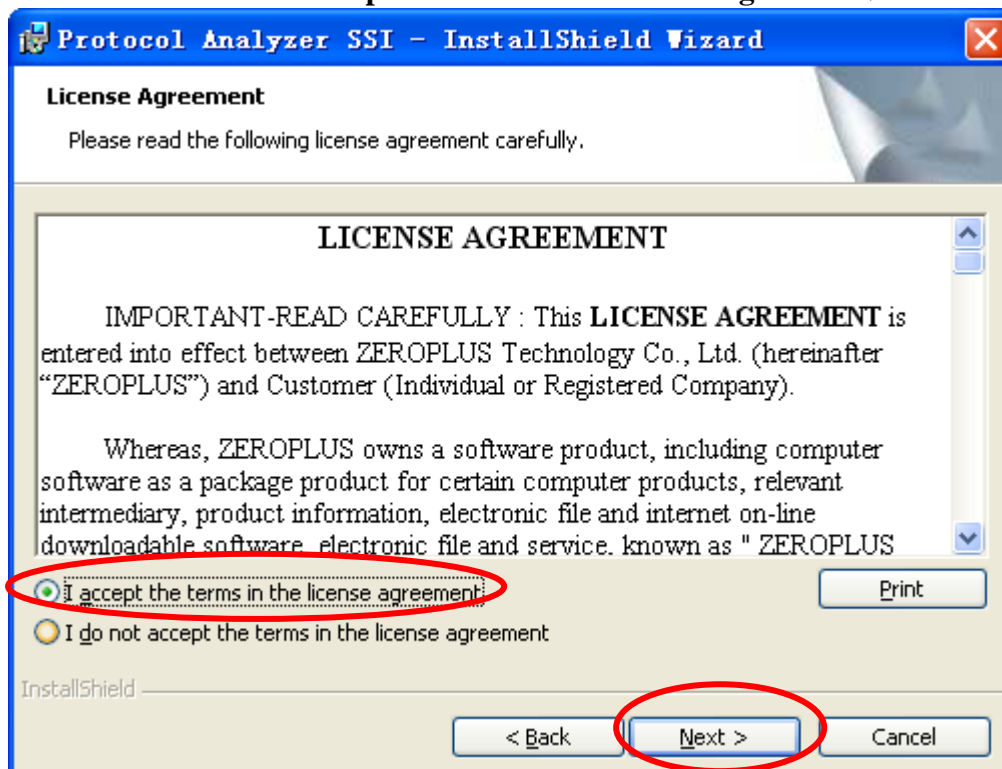




STEP 3. Click Next.



STEP 4. Select **I accept the terms in the license agreement**, and then press Next.





STEP 5. Fill in users' information in the below dialog box and click **Next**.

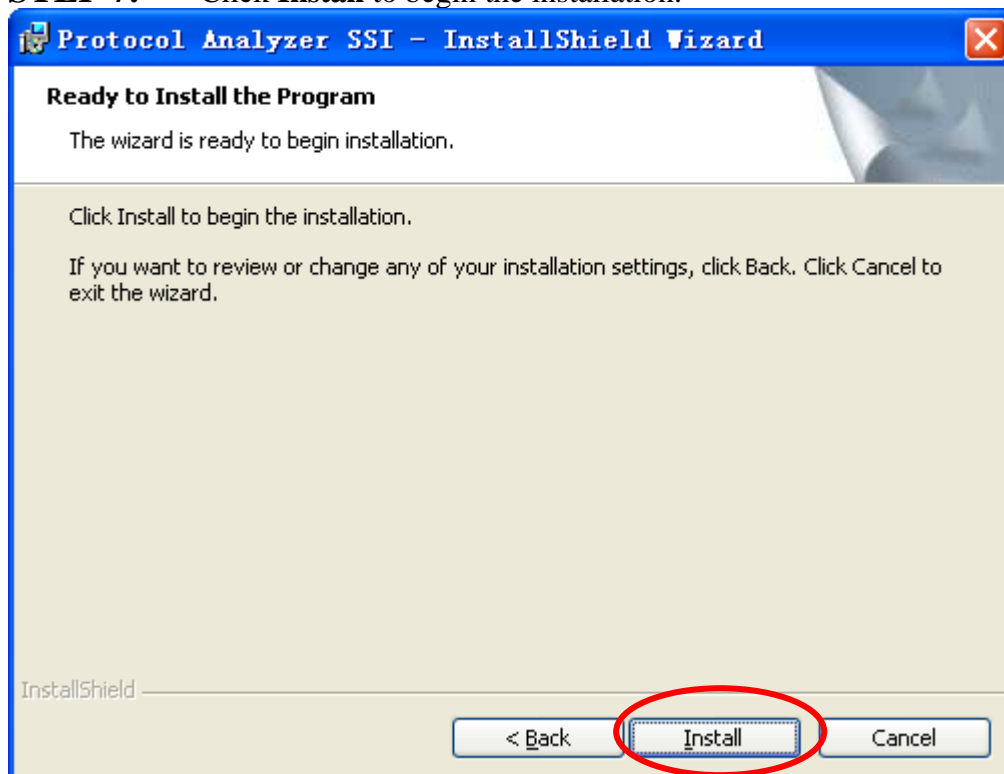
The dialog box is titled "Protocol Analyzer SSI - InstallShield Wizard". It has a "Customer Information" section with the instruction "Please enter your information." Below this are two text input fields: "User Name:" with the value "sunshine" and "Organization:" with the value "zeroplus". There is a section "Install this application for:" with two radio button options: "Anyone who uses this computer (all users)" (which is selected) and "Only for me (sunshine)". At the bottom, there are three buttons: "< Back", "Next >" (which is circled in red), and "Cancel". The "InstallShield" logo is visible in the bottom left corner.

STEP 6. First, select **Complete** and then click **Next**.

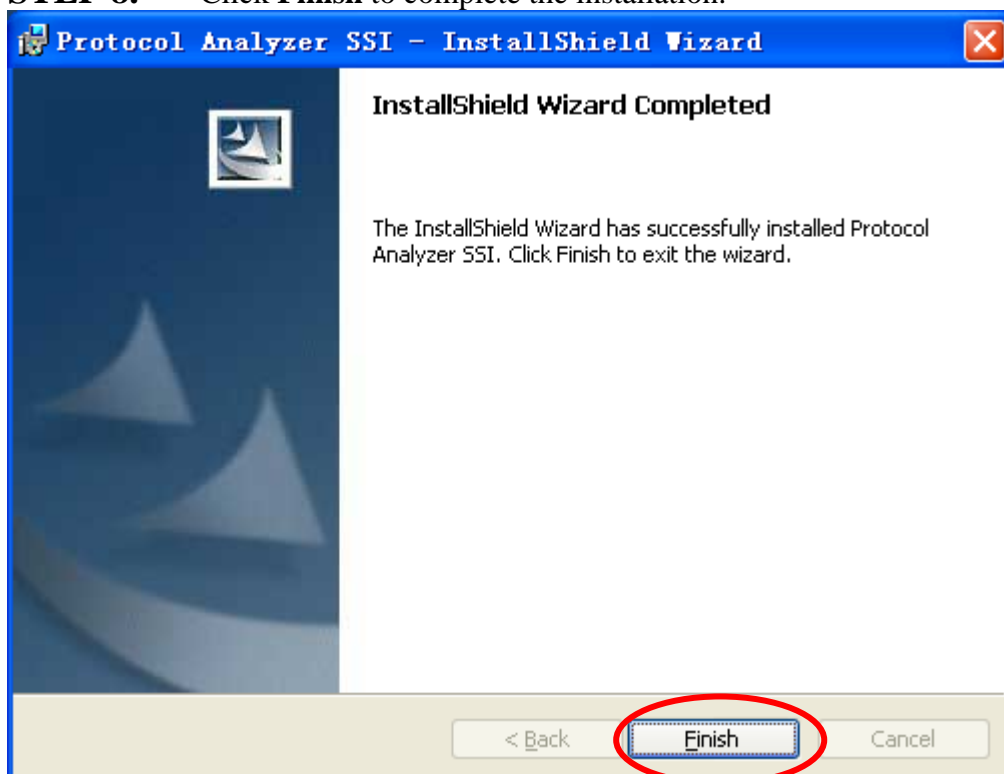
The dialog box is titled "Protocol Analyzer SSI - InstallShield Wizard". It has a "Setup Type" section with the instruction "Choose the setup type that best suits your needs." Below this is the text "Please select a setup type." There are two radio button options: "Complete" (which is selected) and "Custom". The "Complete" option has a description: "All program features will be installed. (Requires the most disk space.)" and is accompanied by an icon of a computer with a red 'X'. The "Custom" option has a description: "Choose which program features you want installed and where they will be installed. Recommended for advanced users." and is accompanied by an icon of a computer with a green checkmark. At the bottom, there are three buttons: "< Back", "Next >" (which is circled in red), and "Cancel". The "InstallShield" logo is visible in the bottom left corner.



STEP 7. Click **Install** to begin the installation.



STEP 8. Click **Finish** to complete the installation.

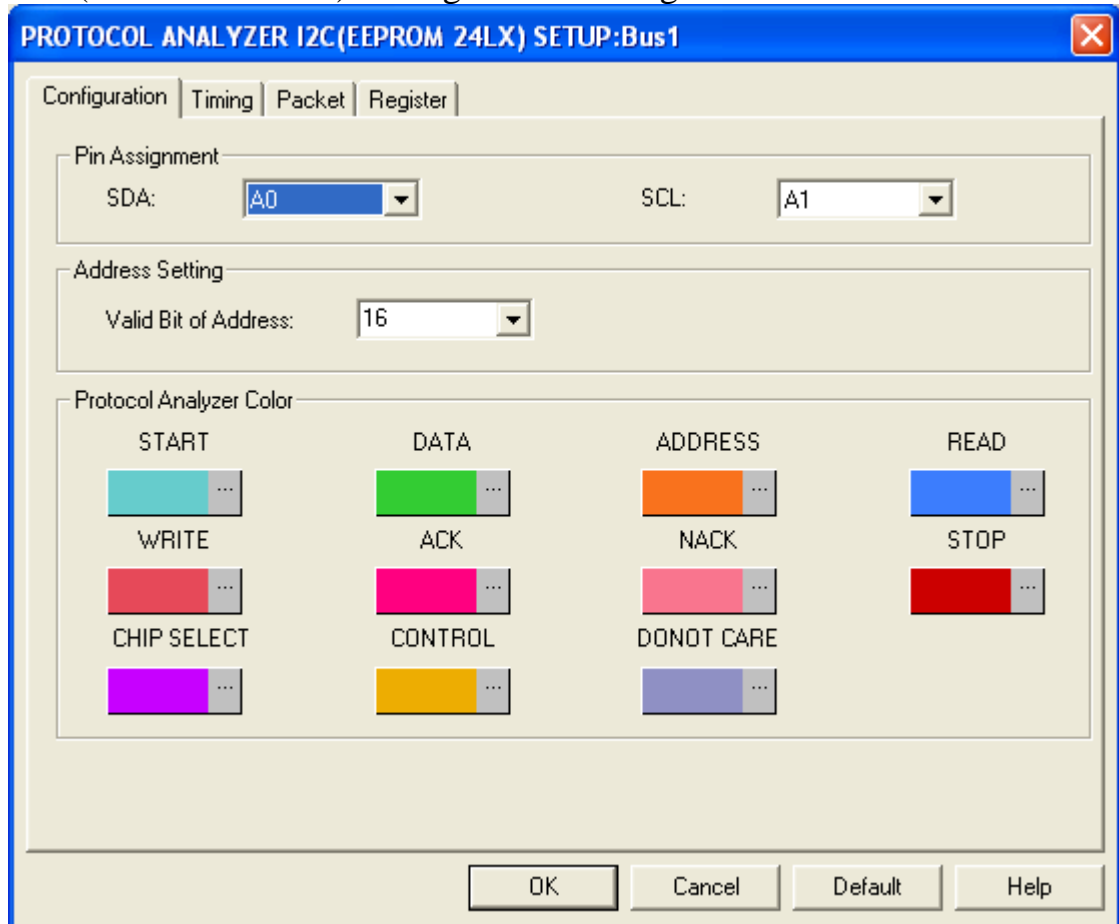




2 User Interface

In the configuration dialog box, please refer to the below images to select options of setting **I2C (EEPROM 24LX) MODULE**.

I2C (EEPROM 24LX) Configuration Dialog Box



Pin Assignment: There are two channels, SDA and SCL; users can set the channels for them as their requirements, and the set result will affect the correctness of the decoding.

SDA: Its default is A0; it is the data transmission channel when decoding.

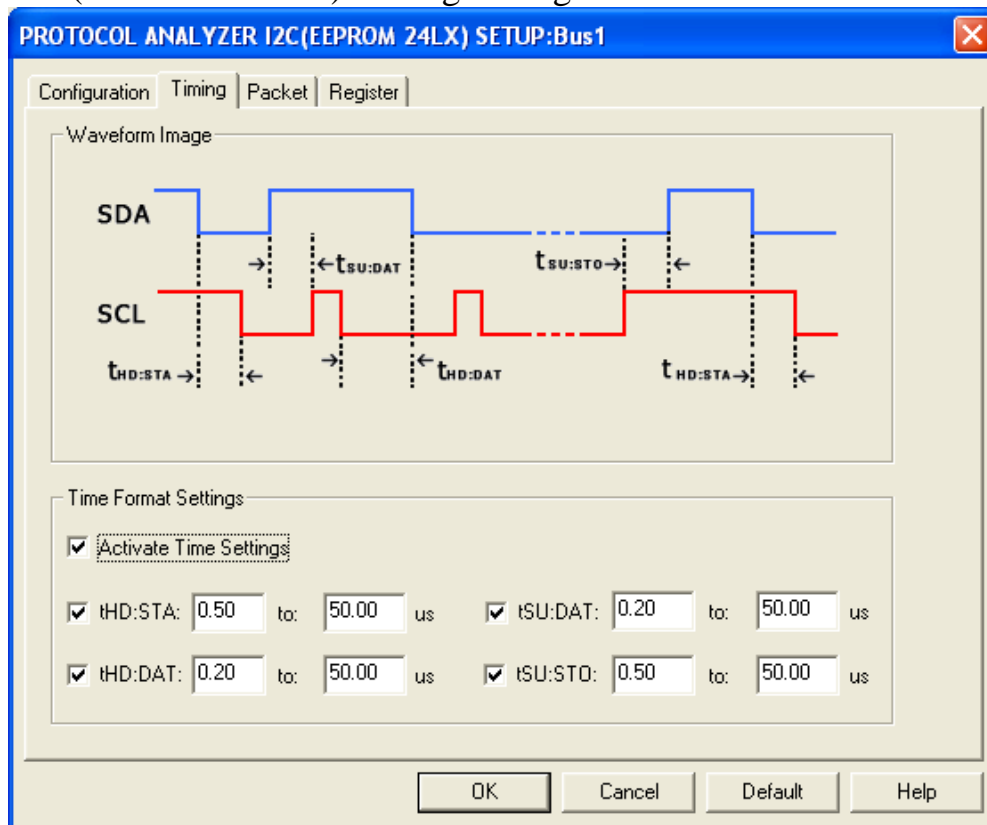
SCL: Its default is A1; it is the clock transmission channel when decoding.

Valid Bit of Address: It is used to set the length of ADDRESS; users can set the length within the range from 4 to 16; therein, the length must be an integer.

Protocol Analyzer Color: It is used to set the colors of the items; users can vary the color as their requirements.



I2C (EEPROM 24LX) Timing Dialog Box



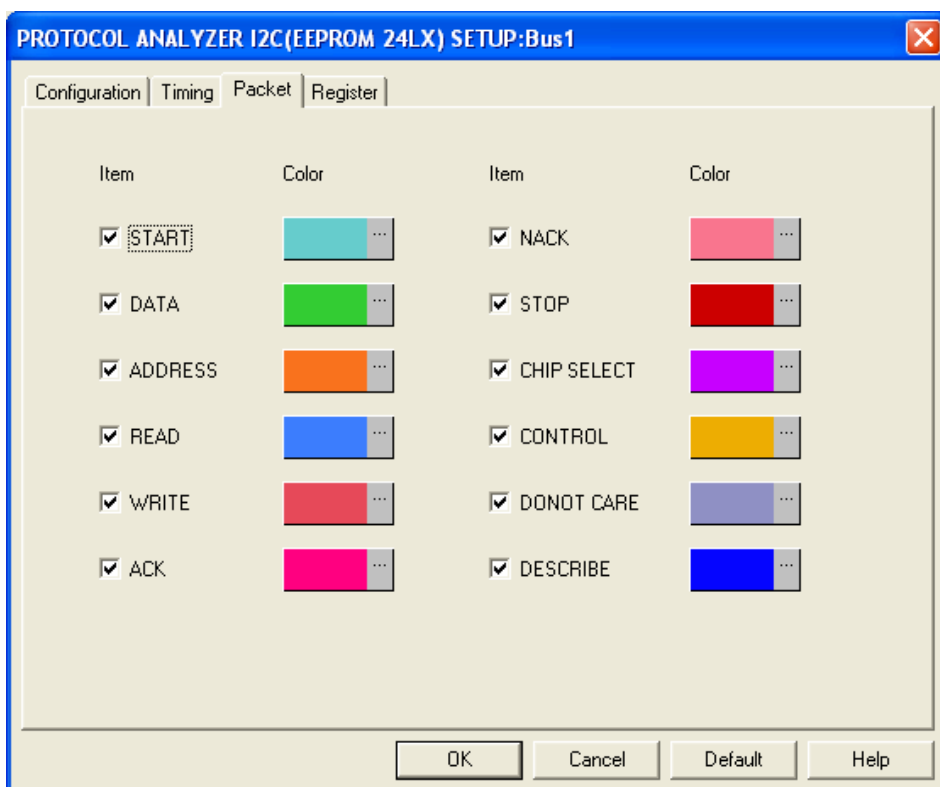
Timing: It can make the analysis of the data within the flexible time according to the different Timing settings.

Waveform Image: Describe the position of the set time.

Time Format Settings:

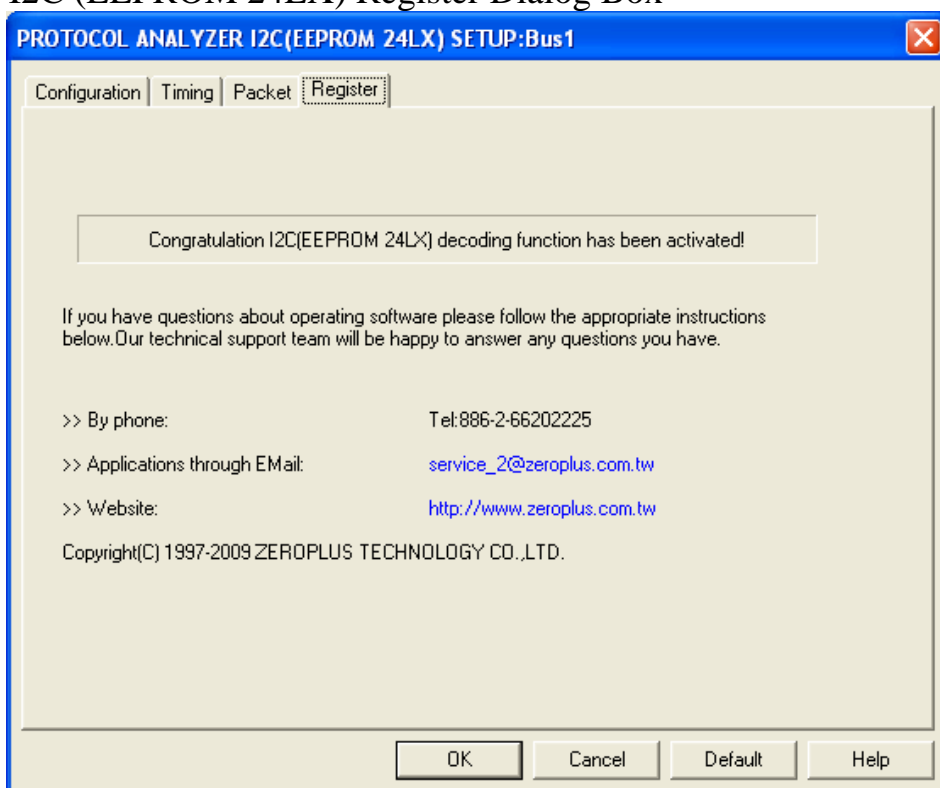
It can set the time after activating time settings. The set time can be taken as the conditions of judging decoding. For example, decoding START, firstly judge whether the conditions of START is coincident or not, then judge whether the set time of $t_{HD:STA}$: Whether the set time of STA coincides with the factual waveform. It can start decoding START when both of the two conditions are coincident. The other packet segments are the same with the above theory.

I2C (EEPROM 24LX) Packet Dialog Box



Users can vary the color of the packet as their requirements.

I2C (EEPROM 24LX) Register Dialog Box

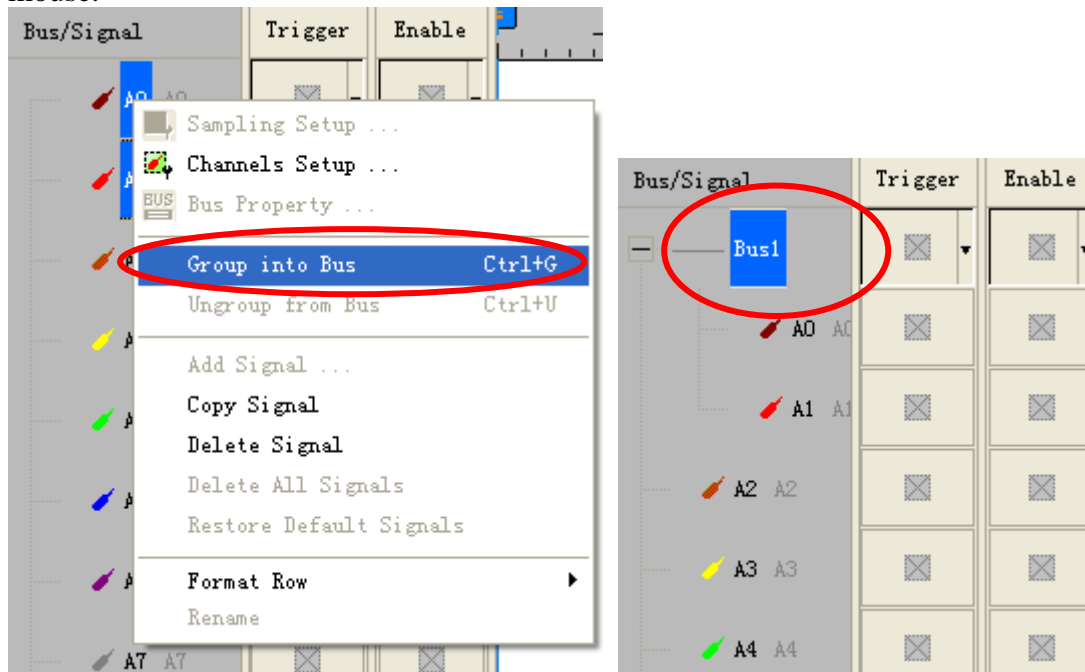


There is written ZeroPlus company information. If you have any questions about software operations, you can contact ZeroPlus by Telephone or Email.

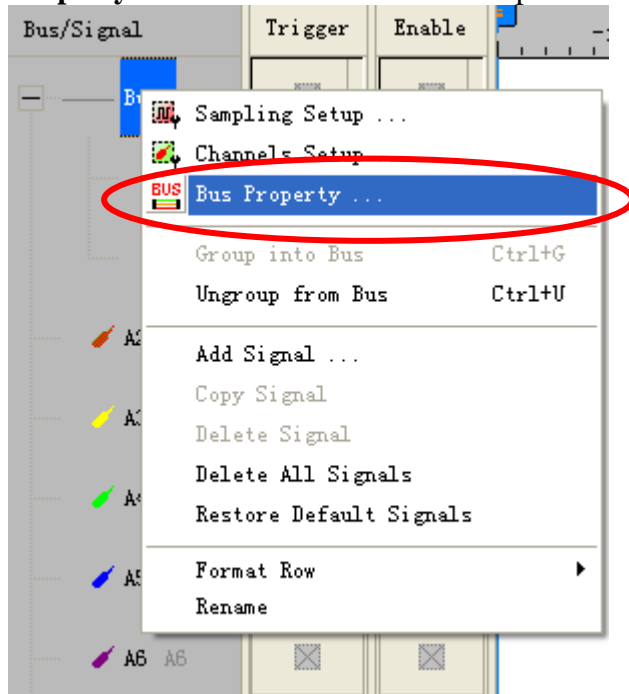


3 Operating Instructions

STEP 1. Group the unanalyzed channels into **Bus1** by pressing the **Right Key** on the mouse.

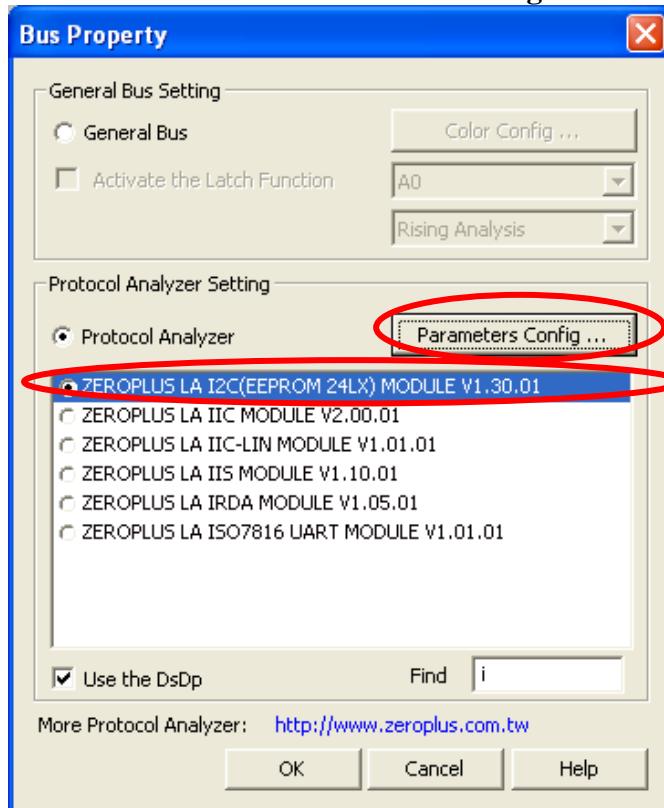


STEP 2. Select **Bus1**, then press **Right Key** on the mouse to list menu, then press **Bus Property** or **Bus** bar on the toolbar to open **Bus Property** dialog box.

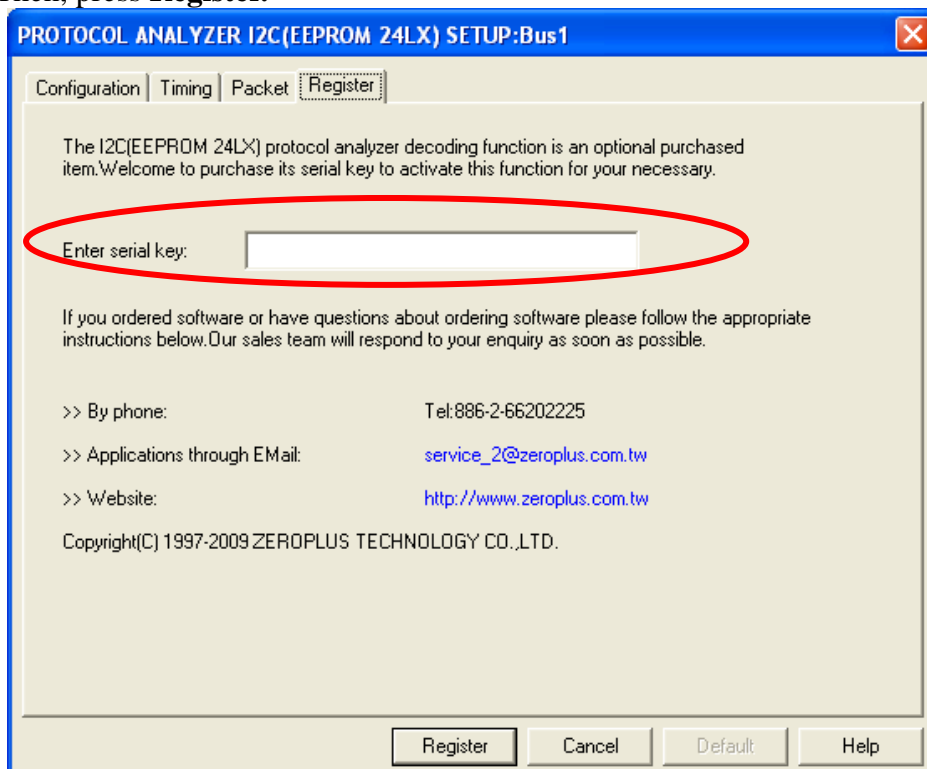




STEP 3. For Protocol Analyzer I2C (EEPROM 24LX) Parameters Configuration, select Protocol Analyzer, and then select **ZEROPLUS LA I2C (EEPROM 24LX) MODULE V1.30.01**. Next click **Parameters Configuration** to open **Configuration** dialog box.

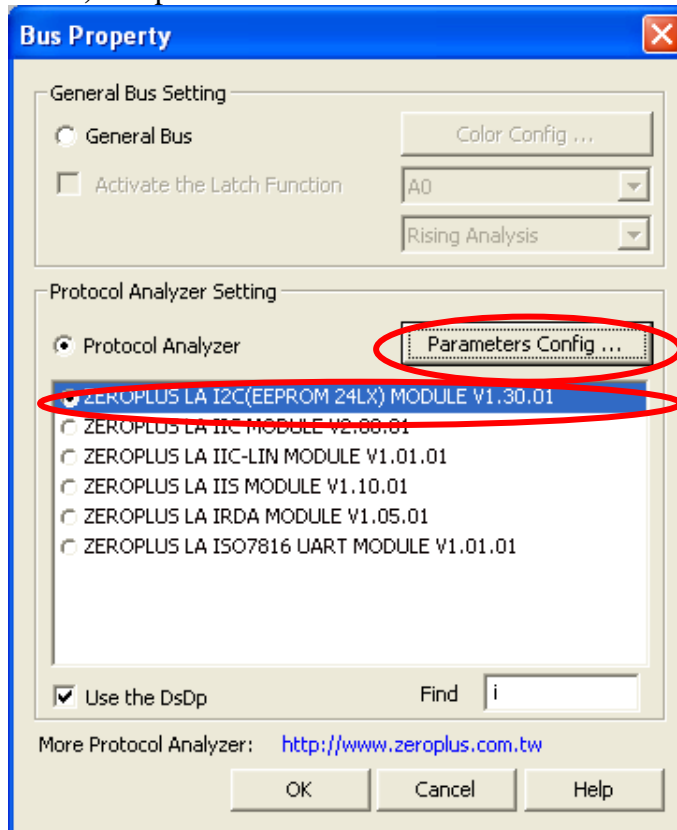


STEP 4. Click Register tab to type the serial key number of I2C (EEPROM 24LX). Then, press **Register**.

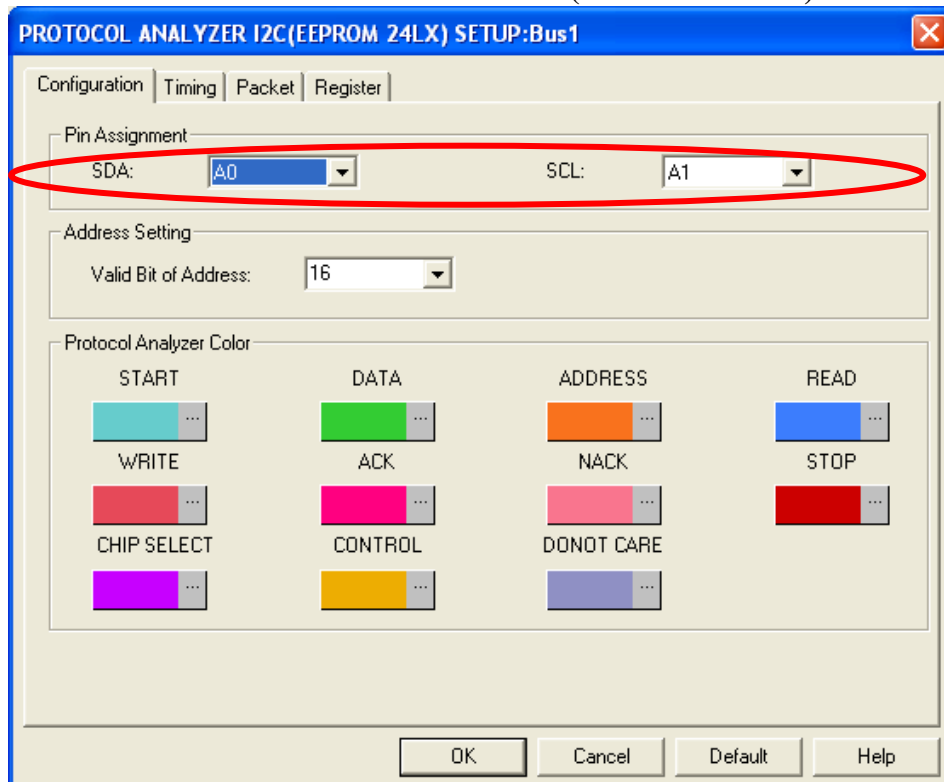




STEP 5. After completing **Register**, come back to the **Bus Property** dialog box, and then click the **Parameters Configuration** to start the Protocol Analyzer **I2C (EEPROM 24LX)** setup.

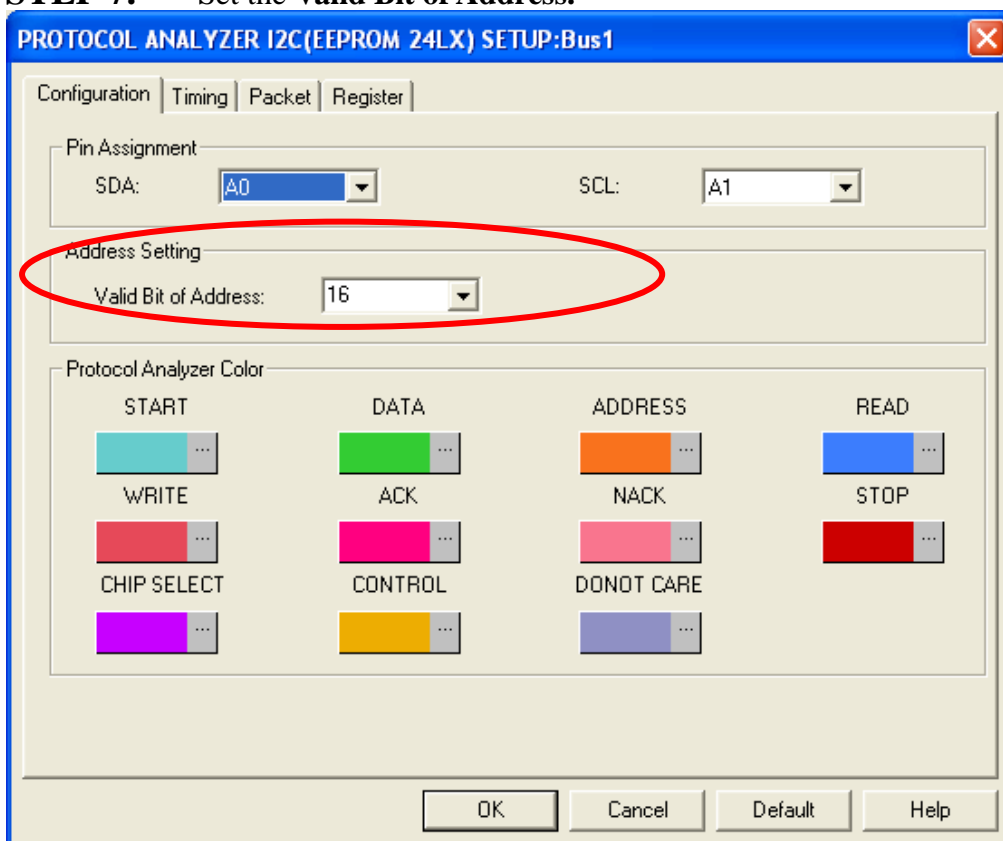


STEP 6. Set the two channels of **I2C (EEPROM 24LX)**.

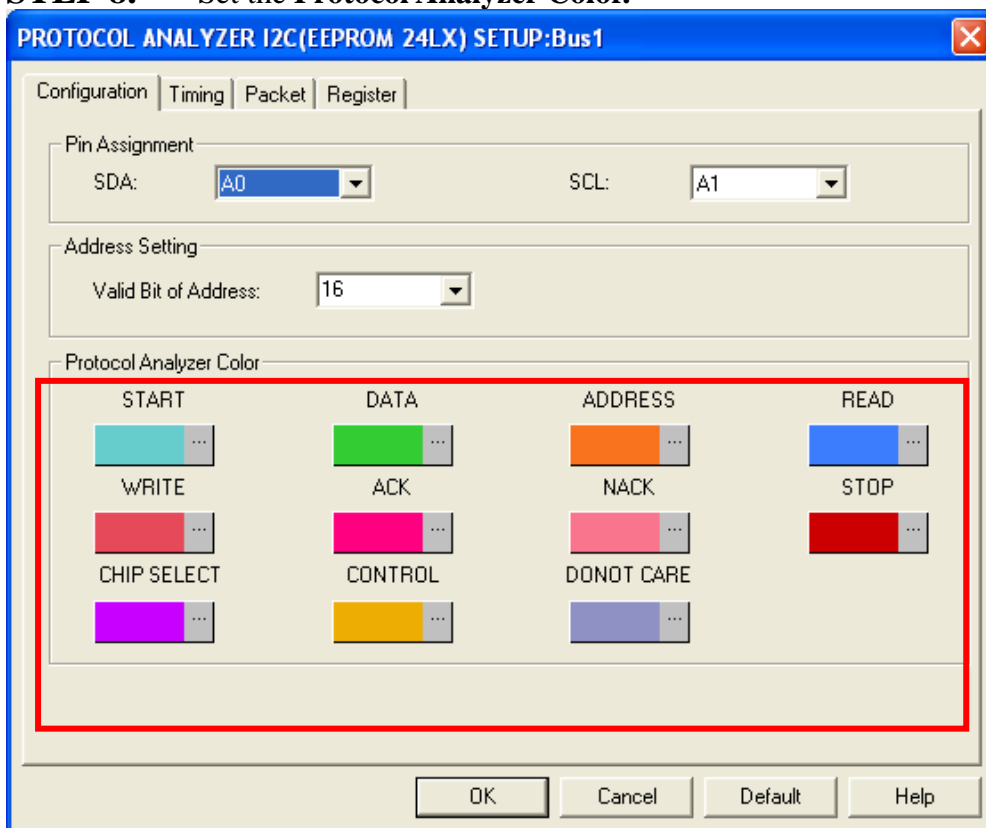




STEP 7. Set the Valid Bit of Address.

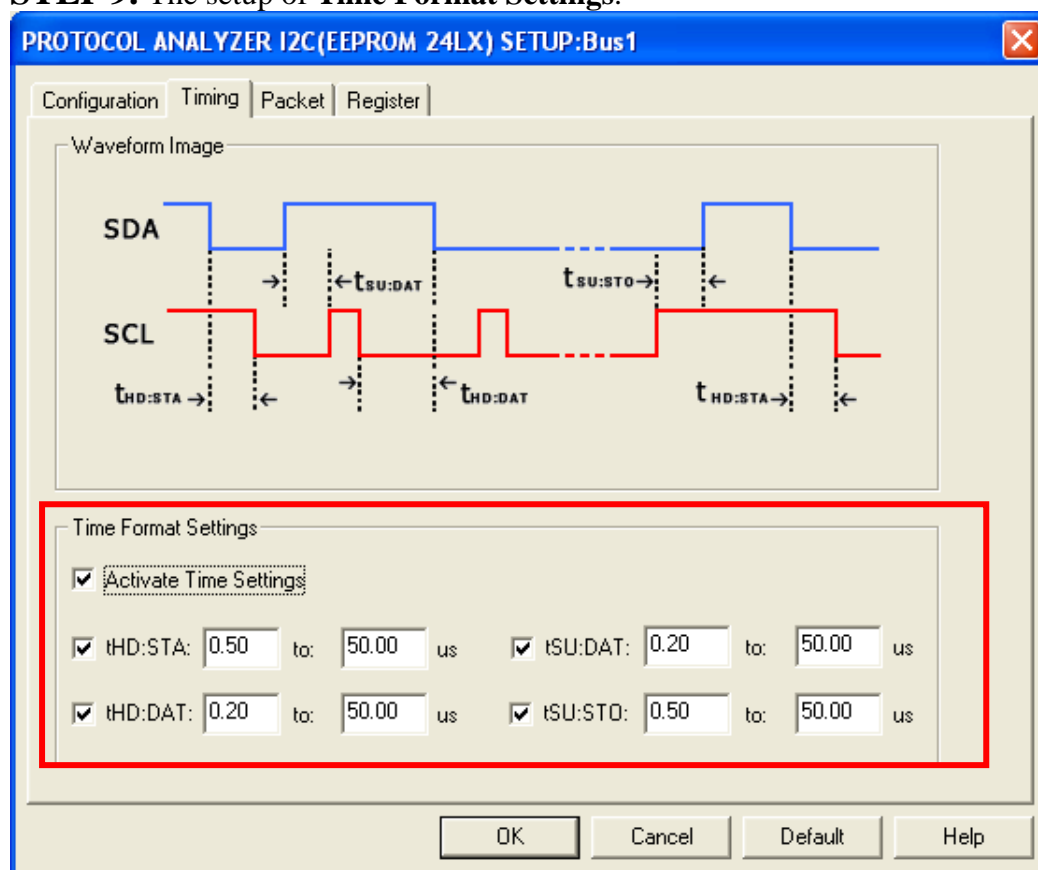


STEP 8. Set the Protocol Analyzer Color.



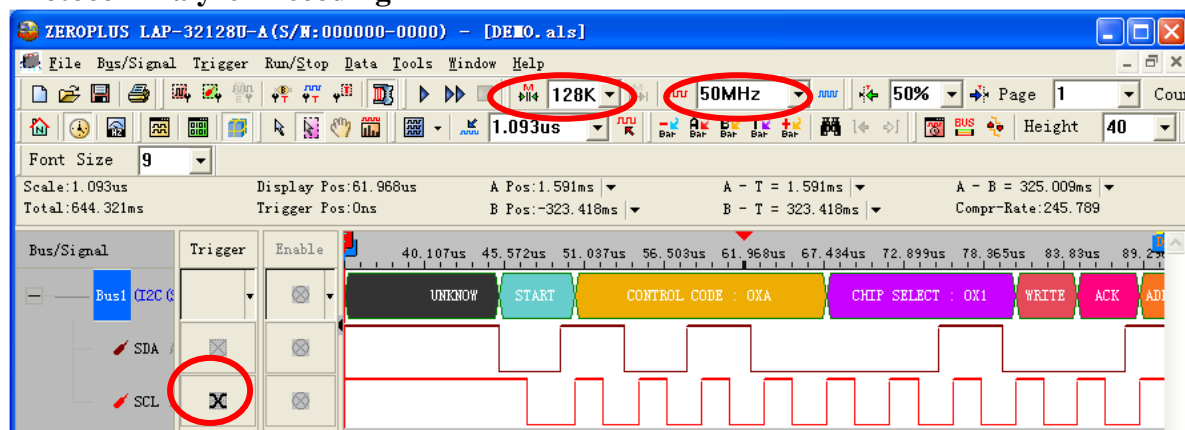


STEP 9. The setup of Time Format Settings.



STEP 10. Following pictures show the completion of the protocol analyzer decoding and the packet list. The trigger condition is set as Either Edge; the memory depth is 128K; the sampling frequency is 50MHz.

Protocol Analyzer Decoding





Packet List

